

Southend & Leigh CIRCUIT NEWSLETTER



Summer Edition 2024

Third Quarter

Contents

- Message from a Local Preacher
- Circuit Calendar
- Church Activities
- Prayer Diary
- Circuit News
- Upcoming Events

Welcome to our Circuit

We are a group of 15 Methodist Church fellowships, including a Zimbabwean fellowship, on 17 sites in the southeast corner of Essex. Our Circuit also incorporates 'Westerley', a Christian care home.

Our churches provide traditional services alongside an increasing number of contemporary and family-friendly expressions of worship.

We have a growing sense of service and mission to our communities, with a desire to love our Lord, and our neighbours.



FOLLOW / CONTACT US



[Southend and Leigh Circuit Facebook Page](#)

[Southend and Leigh Circuit Website](#)



Message from a Local Preacher

Dear Circuit friends,

As I have been a Local Preacher, officially since 2001, most of you will have seen me or heard me at some point.

It was years before 2001 that kind people quietly but persistently encouraged and nudged me to consider local preaching. The discipline of preparation and creativity for services is sometimes difficult but, in the end, a real joy.

As a teacher I did always want to engage children, to make them think, wonder, and come to their own thoughts. It is much like that for me when I am preparing worship. I need to thank members at Wesley for allowing me to try some ideas out especially at Creative Worship. So, the question that then arises is do we come to worship with an open mind to encounter God or do we look at who is preaching and decide.

Recently, I have been very privileged to help those responding to a call or not to ordained ministry. Those relatively new to Methodism and not having experienced the *Worship: Leading and Preaching* course do seem to have this idea that Methodist services always have 5 hymns, prayers and of course a sermon or an alternative to a sermon. Yes, there is a traditional pattern and yes, we have to consider the traditions of the congregation but as long as you know why you have chosen to do something different, and the congregation is at least a little prepared it can be very different. The most obvious service being 'Messy Church' or Anchored at the Fisherman's Chapel or Inspire Service at Wesley. In Billericay one Methodist Church has a weekly service on a Friday rather than a Sunday. Society has changed and alas for many families Sunday is simply not a day of rest, so I urge you to be open to something different.

Responding to a call to do God's work whether it is lay or ordained is possible through an Explore programme through the Connexion and open to anyone. If you want more details look at the Methodist Church in Britain website or talk to me. A calling never really stops, for that is God's way but along the way there are joys to be had. May I suggest two to you. Firstly, after I have submitted this article, I will be attending the ordination service for Deacon Margaret Chipandambira in Leeds, an amazing journey of faith and endeavour. The second is our own Pastor Steve's welcome service on Monday 2nd September – do come and enjoy – a lifetime of responding to God's calling.

What is God calling you to do?

God bless whatever you do,

Jane Fulford



Circuit Calendar 2024

JULY

Wed 3rd – Worship Academy, 7pm, Benfleet Methodist Church

Sat 6th – Circuit Prayer Breakfast, 8.30am, Zoom (details available from Circuit Office)

Wed 10th – Minister's Staff Meeting, 2pm

Thu 11th – Local Preachers Meeting, 7.30pm, Highlands Methodist Church

Sun 14th – Circuit Farewell Service for Revd Dr Calvin Samuel, 6pm, Rayleigh Methodist Church

Sun 14th – Gospel Vespers 7pm for 7.30pm, The Fisherman's Chapel

Wed 17th – CLT, 7.30pm, Highlands Methodist Church

Sat 20th – Worship Academy, 10am-4.30pm, Wesley Methodist Church

AUGUST

Sat 3rd – Circuit Prayer Breakfast, 8.30am, Zoom (details available from Circuit Office)

Sun 11th – Gospel Vespers 7pm for 7.30pm, The Fisherman's Chapel

SEPTEMBER

Mon 2nd – Circuit Welcome Service, Revd Steve Mayo, 7.30pm, Wesley Methodist Church

Wed 4th – CLT, 7.30pm, Highlands Methodist Church

Sat 7th – Circuit Prayer Breakfast, 8.30am, Zoom (details available from Circuit Office)

Sun 8th – Gospel Vespers 7pm for 7.30pm, The Fisherman's Chapel

Mon 9th – Local Preachers Meeting, 7.30pm, Wesley Methodist Church

Wed 11th – Minister's Staff Meeting, 2pm

Wed 11th – Circuit Meeting, 7.30pm, Hadleigh Methodist Church

Wed 25th – Wholeness & Wellbeing Service, 7.45pm, Benfleet Methodist Church

OCTOBER

Wed 2nd – Worship Academy, 7pm, Benfleet Methodist Church

Sat 5th – Circuit Prayer Breakfast, 8.30am, Zoom (details available from Circuit Office)

Wed 9th – Minister's Staff Meeting, 2pm

Sun 13th – Gospel Vespers 7pm for 7.30pm, The Fisherman's Chapel

Churches Mid-Week Activities / Events

BELFAIRS METHODIST CHURCH

Boys Brigade – Mondays, Anchor 5:30pm, Junior 6:30pm, Company 7:30pm
Badminton -Tuesdays, 8pm
Parent & Toddlers – Wednesdays, 10am
Girls Brigade – Wednesdays, Explorers & Juniors 5:30pm, Seniors & Brigaders 7pm
Thirsty For? (Café Worship) - second Thursday of the month, 7pm
A.C.T.I.O.N. (Fellowship) - fourth Thursday of the month, 2pm



BENFLEET METHODIST CHURCH

Bible Study - Thursdays, 3.30pm
Wesley Art Group - Mondays, 7.30pm in Wesley Hall
Light Worship - third Tuesday of the month, 12noon
Sunday Lunch - second Sunday of the month, 12.30pm (book in advance with John Stokes at johnstokes660@yahoo.com)
Coffee Mornings - Monday-Saturday, 10am to 12 noon (with a Beading Craft session on Wednesdays)
Ladies' Thursday Club - first Thursday of the month, 7.45pm
Women's Fellowship - first and third Wednesdays of the month, 2.30pm
Wives' Club - Tuesdays, 1.45pm
Benfleet Hope Group - Mondays, 10am-2pm
Messy Church - third Saturday of the month, 3.30pm-5.30pm
Little Bunnies (Mother & Toddler group) - Mondays, 9.30am-11.30am
Fusion Children Groups - Fridays, ages 5-11 yrs 5.30pm-7pm & 11+ yrs 7pm-8.30pm



CANVEY ISLAND METHODIST CHURCH

Bible Study - Tuesdays, 8pm
Wives Club - Thursdays, 2pm
Coffee Morning - Wednesdays, 10.30am-12noon
Coffee Morning - Saturdays, 10.30am-12noon
Wednesday Fellowship - first two Wednesdays of the month, 2.30pm
Midweek Communion - third Wednesday of the month, 10am



CHALKWELL PARK METHODIST CHURCH

Ladies Monday Club - 2nd & 4th Mondays (except BH & August), 2-4pm
Caterpillars Baby & Toddler group - Wednesdays, sch. term only, 9.30am-11.30am
Coffee Morning - 1st Friday of the month, 10am-12noon
Crafty Friday (for adults) - 2nd & 4th Fridays, sch. term only, 10am-12noon



Churches Mid-Week Activities / Events

HIGHLANDS METHODIST CHURCH

Coffee Morning - Saturdays, 10.00am-12noon
Lunch Club - second Tuesday of the month, 12noon (registration essential)
Chatter (Fellowship Group) - Tuesdays, 10am-12noon
Hobbies - first and third Thursdays of the month, 10am-12noon
Prayer Meeting on Zoom - Tuesdays, 9am-10am
Toddlers - Mondays, 9.30am-11.30am



ROCHFORD METHODIST CHURCH

Cake and Kindness (Tea and homemade cakes) - Mondays, 2pm-3.30pm
Bible Studies - Tuesdays, 7pm
Prayer time on Zoom - Wednesdays, 7pm
Housegroup - third Wednesday of the month, 8pm
'Happy Cup' Breakfast Club for children under 5 and carers – Fridays (term-time), 9.30am



THORPE BAY METHODIST CHURCH

Mid-week communion - third Wednesday of the month, 12pm
(lunch afterward – booking required with office@tbmchurch.org)
Bible Study & Soup - 2nd and 4th Wednesday of the month
(booking required with office@tbmchurch.org)
Community Cafe - Wednesday, 10am-12pm
Memory Worship Service & Activities - first Monday of the month, 2pm-3.30pm



THUNDERSLEY METHODIST CHURCH

Coffee Morning - Wednesdays (term-time), 9am-12noon
Coffee Morning - second Saturday of the month, 10am-12noon
Afternoon Club - Tuesday fortnightly, 2.30pm



UNITED METHODIST CHURCH

'Brew, Chew, Renew' (Bible Study with refreshments) - Fortnightly on Monday, 10.30am
Funtime Toddlers – Tuesday 12.30-2.30pm & Wednesday 9-11.30am (term time)
(at UMC Great Wakering site)
Home Group – Tuesdays, 7.30pm (contact office@umcsouthend.org.uk)



Circuit Prayer Diary July-September

*On the following Sundays and during the week
we ask you to pray for:*

JULY

Mid-Week Prayer of Week 27 – Rev Dr Calvin Samuel and family
Prayer for Sunday 7th – Rochford Methodist Church
Mid-Week Prayer of Week 28 – LWP Homes
Prayer for Sunday 14th – Circuit Office
Mid-Week Prayer of Week 29 – Parade Services and Leaders of Uniformed Organisations
Prayer for Sunday 21st – Mission Enablers and Evangelists
Mid-Week Prayer of Week 30 – Castle Point Council, Councillors and Leaders
Prayer for Sunday 28th – Church Councils and Committees



AUGUST

Mid-Week Prayer of Week 31 – Fishermen's Chapel
Prayer for Sunday 4th – Mencap Showstoppers & The Music Man Project
Mid-Week Prayer of Week 32 – Anna Chaplains
Prayer for Sunday 11th – Church Flower Arrangers
Mid-Week Prayer of Week 33 – Rev Zena Smith and family
Prayer for Sunday 18th – Havens Hospices
Mid-Week Prayer of Week 34 – Hirers and external groups that use our premises
Prayer for Sunday 25th – Thorpe Bay Methodist Church
Mid-Week Prayer of Week 35 – Local Preachers



SEPTEMBER

Prayer for Sunday 1st – Circuit, Synod and District Representatives
Mid-Week Prayer of Week 36 – Rochford Section
Prayer for Sunday 8th – Circuit Meeting
Mid-Week Prayer of Week 37 – Thundersley Methodist Church
Prayer for Sunday 15th – For the Harvest and Farmers
Mid-Week Prayer of Week 38 – Rev Margaret Deans and family
Prayer for Sunday 22nd – Wholeness and Wellbeing Services
Mid-Week Prayer of Week 39 – Local Preacher's Secretary
Prayer for Sunday 29th – Trinity Methodist Church



Activities & Events at Wesley Methodist

Wesley Methodist Church

Afternoon Tea, Cakes & Biscuits

2024 dates
Thursdays 2pm-4pm

25th April
30th May
27th June
25th July
August - Holiday
26th September
31st October
&
12th December

All are Welcome

Canteen Room | Wesley Methodist Church
Elm Road | Leigh-on-Sea

Wesley Methodist Church

FUSION Youth & Kids

Dates this term:

11th July
Summer Special
6pm-8pm

Contact:
fusionyouth@btinternet.com / 07766 588877

Wesley Methodist Church,
Elm Road,
Leigh

Hello Friend,

We are so excited to tell you about all the community activities taking place at Wesley and to invite you to join us for fun activities, fellowship, friendship and community! We look forward to welcoming you.

Leigh Wesley Methodist Church

THE SANCTUARY CAFÉ

FRIDAYS 10AM-12PM

SATURDAYS 10AM-1PM

Join us for hot drinks, cake and a good chat in a safe space. A play area, buggy park and quiet space for prayer/reflection are available.

FUSION YOUTH & KIDS

2ND THURSDAY OF THE MONTH
(TERM TIME ONLY)

6PM-7.30PM

Youth Club for children in school years 1 to 6. £1.50 entrance. Xbox's, craft, sports, circus skills, music, food and so much more!

HOUSE GROUPS

A RANGE OF MIDWEEK MEETINGS
DAYTIME AND EVENING

Explore faith and Christianity in these informal groups.

TODDLER GROUP

WEDNESDAYS

10AM-12PM

Playgroup for ages 0-4 and their parents/carers (older siblings welcome in school holidays). Playtime, storytime, parachute, crafts. £2 entry and free tea/coffee and homemade cake.

WESLEY THEATRE GROUP

MONDAYS

8PM

Welcoming all who love acting and/or working backstage.

MUSIC GROUP

SUNDAYS

DURING WORSHIP

Singers and musicians of all abilities welcome!

TALKING POETRY

WEDNESDAYS (FORTNIGHTLY)

2.30PM

Choose, read & discuss a different poet or subject each session.

Please get in touch or see our website for further details (including some restart dates) & details of activities run by our hirers.

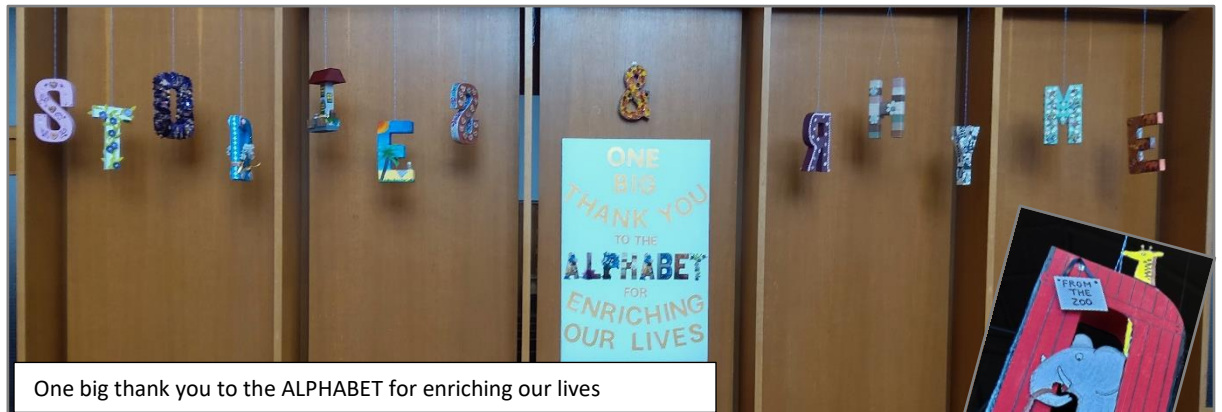
LEIGH WESLEY METHODIST CHURCH IS AN INCLUSIVE CHURCH
AND DEMENTIA FRIENDLY COMMUNITY



Chalkwell Park Anniversary Exhibition

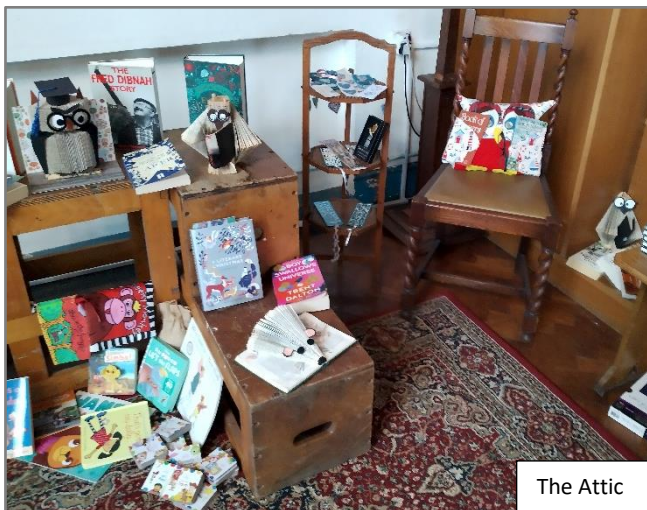
18/19 May 2024

At Chalkwell Park Methodist, it is a tradition to hold an exhibition on our church anniversary weekend. This year the theme was 'A Celebration of Stories and Rhyme' organised by the Crafty Friday group. Church organisations and individual members contributed using some form of craft / photos. The craft group themselves decorated letters of the alphabet as without it we wouldn't have words, stories or rhyme!



One big thank you to the ALPHABET for enriching our lives

Here are just a few of the exhibits on display



The Attic



The Hare and the Tortoise



Paddington brought marmalade sandwiches to share with visitors



'The Owl and the Pussy Cat' Cake
This was enjoyed by the congregation after the anniversary service

WESTERLEY CYCLE RIDE

Robert, Jenny and LWPHomes at Westcliff express their grateful thanks to the Southend and Leigh Circuit for their support of the Bike Ride in April, celebrating Westerley's 75th Anniversary. To Rev Peter and Rev Calvin for coming, to Rev Norman for his wonderful Tribute, and especially Pastor Steve, for organising such a lovely service, much appreciated by both staff and residents. It was just right for the occasion. Thanks also go to Geoff and the folk at Leigh Wesley for entertaining the cycle team, and especially for showing us round their beautiful church, as well as Eileen Simmons from Leigh Wesley for joining us for the send-off at Westerley. It was a great day, and one we shall always remember.



FINALE OF THE CYCLE RIDE

Robert crossed the finishing line at LWPHomes Westerley Christian Care Home in Minehead at 2pm on Friday 31st May. Holding the tape across the entrance was the Manager and a resident of one of the sheltered flats attached to the Home. Cycling slowly uphill, Robert broke through the tape on his bike to cheers from the waiting group of people and some shouts of 'Mind the Traffic!' The neighbourhood must have wondered what was going on!

Once inside with his trusty steed, 4 loaded panniers and the 2 little bears wearing their LWPHomes shirts, the residents welcomed him, and the Manager handed over a generous donation from the Home. Robert was asked to give a short account of his travels and answer questions. Then the feasting began and Robert had to cut the 'Well Done' cake prepared by the chef for the occasion.

It was a great finale to a tremendous journey and a fitting conclusion to weeks of happy pedaling round the country.

Robert covered 640 miles by bike in the end, raising over £3000 – money is still coming in – and hopefully a lot more people now know about Westerley, Westcliff and the other Westerleys across the country.

Thanks go to all who gave such wonderful support – it was a real encouragement to know that people were following Robert's progress and praying for the team. We are very grateful to God for His goodness throughout the trip.

Would Robert do it again? Apparently, 'Yes, but not just yet!'

Jenny Benfield

Vice-Chair of 'The Leaders of Worship and Preachers Homes' (LWPHomes)



Old Testament

in a...



VENUE

Wesley Methodist Church
Elm Road
Leigh - on - Sea
Essex
SS9 1SJ

wesleymethodist.org.uk

Saturday 20th July 2024

10am - 4.30pm

Arrive from 9:30am

Please bring a packed lunch,
or eat in many cafes in Leigh.

Cost £5

Subsidised cost by Southend on Sea
and Leigh on Sea Methodist Circuit
- FREE for children aged 11-17-

PROMOTER

Jane Fulford
Wesley Methodist Church
01702 714213
fulford.family@btinternet.com



The Old Testament is massive, often hard to understand and difficult to navigate.

Relax and enjoy the journey as an experienced presenter encourages you to see God's Word through the 'Big Picture'. Our **ENGAGING** and **MEMORABLE** sessions will help you learn with such **CLARITY** you'll be able to retell the whole **STORYLINE** to a friend. We will also do our best to **INSPIRE** and **EQUIP** you to keep digging deeper with fresh insight.

Join us as we go from Genesis through to Moses and the Promised Land, the Kingdoms of Saul, David and Solomon, and onwards to the Exile and the coming of the Prophets.

The Experience Project Family Easter Party



We had a fantastic day with over 100 children and adults in attendance celebrating Easter with games, crafts and chocolate eggs. There was a real sense of community spirit and we are delighted that many residents have started to volunteer at the Project, making a real difference in their neighbourhood.



The Experience Project Showcasing our Mission and Work in the Community



Staff and Volunteers

Visit to Care Home next door dropping Easter gifts to residents and care staff



Visit to wards at Southend University Hospital with thank you packages to Doctors, Nurses, Paramedic Crew and other staff



Our pop-up Charity Shop supplying donated books, toys and clothes to the residents who visit our food-fun bank or pop in during the week



Healing Sensory Room designed to tackle stress and anxiety and improve mental health and well-being



The Southend and Leigh Circuit would like to express their gratitude to the Enovert Community Trust who grant-funded a solar installation at the Whittingham Mission Centre for The Experience Project, as well as The Solartherm UK Team for delivering the installation. It is a huge leap forward to achieving net-carbon zero by 2030. If any churches in our Circuit are interested in learning more about solar installation please get in touch with us.



Supported by
Enovert Community Trust

through the
Landfill Communities Fund



SolarTherm UK[®]
Part of Silvercrest Energy Ltd



Silver Eco Church Award Certificate

This is to certify that

The Whittingham Mission Centre, Southend-on-Sea

has won a Silver Eco Church Award in recognition of their efforts
to care for God's earth in each of the following areas (as applicable):

Worship and Teaching
Management of Buildings and Land
Community and Global Engagement
Lifestyle

Signed Andy Atkin Date 19 June 2024
CEO, A Rocha UK



ecochurch.arocha.org.uk
arocha.org.uk



Thundersley Methodist 100th Church Anniversary

On the morning of Saturday 4th May we started our celebrations by inviting anyone from the Circuit to come along to our Coffee Morning. We welcomed between 30 and 40 people along from the circuit and the community. There were also memorabilia on show.

Then the weekend of 11th/12th May started off with 45 people attending the Anniversary meal on Saturday night which was enjoyed by all. The number comprised of members and friends of Thundersley Methodist Church with previous ministers and former members. We thank John, Shelagh, Doreen and Colin who cooked and served our meal for us who were from Benfleet Methodist Church.

After the meal, greetings were read out from some former ministers of Thundersley Methodist Church. This was followed by a brief word from Revd. Zena Smith followed by Revd. Dr. David Chapman (Chair of the Beds. Essex and Herts. District).



Revd. Zena Smith, Revd. Peter Moorhouse, Mrs. Jo Richards,
Ms. Anne Lane, Revd. Robert Richards, Revd. Dr. David Chapman
and Mrs. Sue Chapman

(Photograph by courtesy of Luke Argent)

Sunday worship was led Revd. Robert ('Bob') Richards who was a minister at Thundersley Methodist Church 1986 – 1996. It was good to see more in the congregation on the Sunday than we have seen in recent months. We were also joined by our own minister, Revd. Zena Smith. This was followed by refreshments with an anniversary cake.



Congregation at the Sunday Anniversary Service
(Photograph by courtesy of Luke Argent)

Over the next two months (June and July) we have two more coffee mornings of celebration. The first inviting the residents of Kennington Avenue and the community. The second inviting all those who use the premises during the week and the community.

A book has been compiled called 'Thundersley Methodist Church 1924 – 2024' and there are a few copies left, priced at £7.50.

Anne Lane

Circuit Farewell Service For The Rev'd Dr Calvin T Samuel

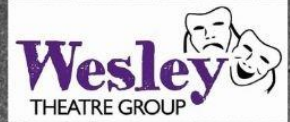


**Join us to say a fond farewell to Calvin,
with worship, word and food.**

**When: Sunday 14th July 2024 at 6pm
Where: Rayleigh Methodist Church, 78
Eastwood Road, Rayleigh, SS6 7JP.**

All Welcome.

WESLEY THEATRE GROUP
PRESENTS



BOARD TO DEATH

A Dinner Theatre Murder Mystery
by Ian McCutcheon

SAT 6TH JULY
at 7PM

Wesley Hall | Elm Road | Leigh-on-Sea

TICKETS: £10

Includes the meal and
evening entertainment

**BOOKING
ESSENTIAL
BY 4TH JULY
BOX OFFICE
01702 557764
BUY ONLINE:**

**WWW.TICKETSOURCE.CO.UK
/WESLEY-THEATRE-GROUP**

BY KIND PERMISSION OF LAZY BEE SCRIPTS



Worship Academy 2024-2025

Season 12

**FIRST WEDNESDAY OF EVERY MONTH EXCEPT AUGUST,
SEPTEMBER & JANUARY**

BENFLEET METHODIST CHURCH SS7 5LH

7 PM FOOD & FELLOWSHIP

8 PM WORSHIP & LEARNING

The Christian Calendar and Christmas

**2nd October – The Christian Calendar
PAUL WOOD and IAN WORSFOLD**

**6th November – What is the Methodist Connexion
offering for Christmas?
RICHARD ARMIGER**

**4th December – Planning for Christmas Services
COLIN and CATHY TURNER and WORSHIP ACADEMY
SUPPORTERS**

Easter

**5th February – Holy week Scripture
DAVID CHAPMAN**

**5th March – What is the Methodist Connexion offering
for Easter?
JONATHAN DEAN**

**2nd April – Planning for Easter Services
BOB and ANNE BRIANT and WORSHIP ACADEMY
SUPPORTERS**

Remembrance

**7th May – Remembrance Scripture
MOSES AGYEM**

**4th June – Planning for Remembrance Services
JANE FULFORD and WORSHIP ACADEMY SUPPORTERS**

2nd July – Fellowship, Feedback and Future Planning

**WORSHIP ACADEMY SPECIAL – SATURDAY 14TH JUNE
MICHAELA YOUNGSON**

At Highlands Methodist Church

www.southendandleighcircuit.org